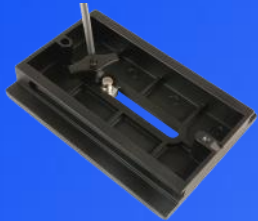


Changing the Camera Screw Fixing



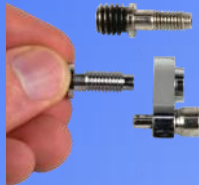
1. Remove the knob retaining screw.

2. Remove knob by turning anti-clockwise.





3. Remove the camera fixing screw from the slot.

4. Change the camera fixing bolt for the alternative size.



5. Replace the knob by turning clockwise, then replace the retaining screw and retighten.

Specifications

Models		
	Medium	Heavy
Folded Height (mm)	760	910
Max. Operating Height (mm)	1575	1750
Minimum Height (mm)	720	810
Net Weight (Kg)	4.2	9.3
Max. Load Capacity (Kg)	6	18
Tilt Range (degrees)	-85/90	-85/85
Pan Range (degrees)	360	360
Ball Base (mm)	60	70
Camera Fixing	Quick attachment & release slide system, 3/8" and 1/4" camera screw	
Material	Aluminium	Aluminium

Heavy Tripod Guide



Components

A	Leg locking knobs
B	Head
C	Spreader
D	Bag
E	Hot shoe
F	Pan bars
G	Pan bar clamp
H	Hot shoe locking knob
I	Pan lock



Assembly



1. Before opening the tripod, release all three locking knobs and lift up the tripod to the desired height. Relock the legs and open the tripod.

2. Level the head by loosening the knob (A) under the head.



3. Fit pan bars by placing them in the clamp and securing them with the bolt (A)



4. Lock the head by using the tilt (A) and pan (B) locks.



5. To remove the hot shoe loosen the hot shoe locking knob so that the hot shoe moves freely.

6. Turn the safety lock anti-clockwise to allow the hot shoe to slide free.



7. Attach the hot shoe to a camera or prompter and place back on the tripod head.

8. There is a choice of 1/4" or 3/8" BSW camera fixings.



9. Adjust the spreader so that the legs are at the desired angle by loosening the spreader adjustment knob and then retighten it.