

Camera Fixing



Fix the camera in place using the camera screws provided.



Connect the power supply and the VGA or video cable.



17" Monitor



10" Monitor



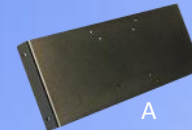
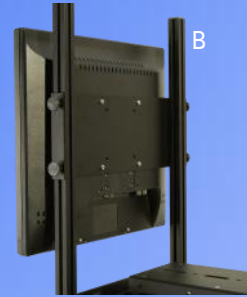
Alternative Configurations

The SSP 17" and 10" can be reconfigured into different prompting solutions.



Straight Read Configuration

1. Remove the hood and monitor.
2. Mount the monitor to the monitor mounting plate. (A)
3. Mount the monitor to the hood up-rights. (B)



Free Standing Configuration

1. Remove the hood upright mounting.
2. Mount the monitor on the monitor mounting plate.
3. Attach to any tripod with a 1/4" BSW fixing.



Floor Standing Configuration

1. Remove the hood assembly.
2. Remove the monitor assembly and mount on the opposite side of the plate.



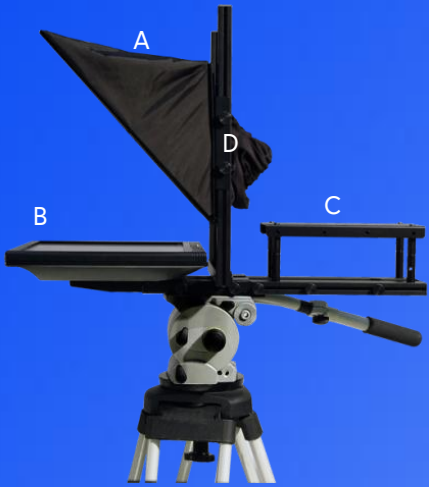
autocue.com

SSP17/10

Guide

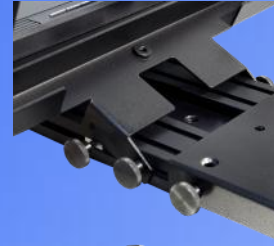


Components



| | |
|---|-----------------|
| A | Hood and Glass |
| B | Monitor |
| C | Mounting Plate |
| D | Hood Adjustment |

3. Lock the hood into position by tightening the four thumb screws.



Assembly

1. Fix the hot shoe from your tripod to the underside of the mounting plate. Slide the hot shoe to the approximate position and tighten the screws.



2. Mount the unit on the tripod and raise the hood to the upright position

Mounting the Camera

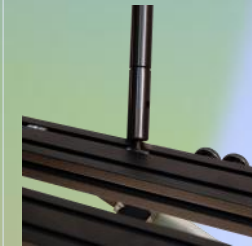


1. It is important that the camera lens is in the centre of the aperture at the rear of the hood. This is achieved by raising and lowering the camera mounting plate and hood.

2. For larger cameras the mounting plate may need extending. Loosen the four thumb screws on the camera plate and remove the rear two, the plate will now slide out. Replace the two rear screws and tighten them to secure the plate.



3. For smaller cameras the camera plate will need to be raised. Remove the four thumb screws and then lift off the plate.



4. Install four camera plate pillars of the appropriate height.



5. Re-fix the camera plate using the four screws provided.



6. To achieve the maximum height, combine the long and short pillars.

Pillar combinations